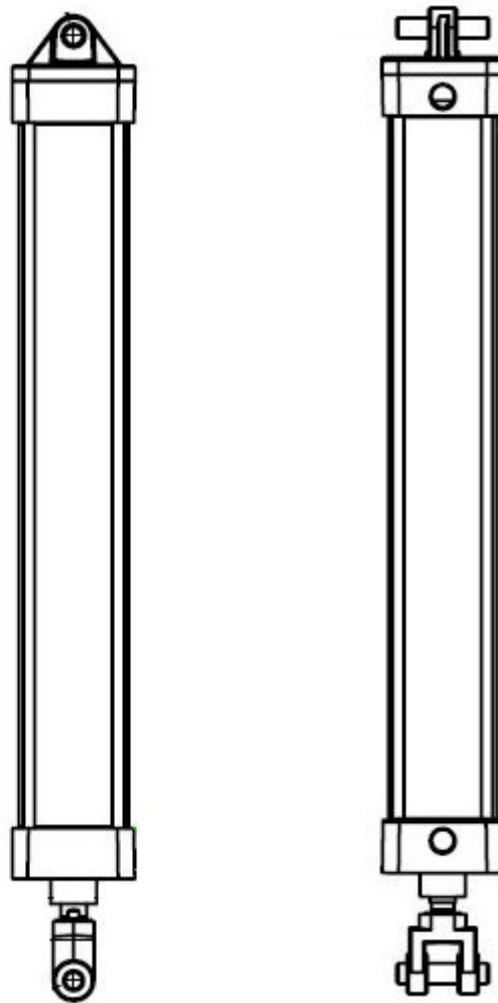


# Pos-A-Lift

# Pneumatic Lifting Hoist

## Features:

- ◆ Ideal for repetitive heavy parts loading
- ◆ Capacity up to 2,000 lbs
- ◆ Stroke up to 60 inches
- ◆ Allows loads to be handled with speed and precision
- ◆ Straight rod reduces drag and overtravel problems



The Pos-A-Lift is a pneumatic lifting mechanism (hoist) that acts as a straight rod between the load and the support.

The load can be set to **"float"** by making the load virtually weightless and because the operator retains **"load feel"**, it is far easier to position and set loads with speed and precision.

The straight rod **"reduces drag"** and **"overtravel"** problems, inherent with conventional chain and wire rope hoists.

The Pos-A-Lift is ideal for performing repetitive parts handling or handling and positioning tools and fixtures.

**SPEED**



**PRECISION**



**RELIABILITY**

# Pos-A-Lift

## Flexible Configuration

You have a choice of two different controls to suit your particular requirements:

**PISTOL GRIP METERING VALVE (PGMV)** provides the operator with indefinitely variable up/down speed control for effortless operation and precision handling that automatically adjust with variable load conditions.

**BALANCING CIRCUIT** is a simple dial adjustment that can be set to match the control with load weight and permits the operator freedom of both hands to guide and position the load.

## Benefits:

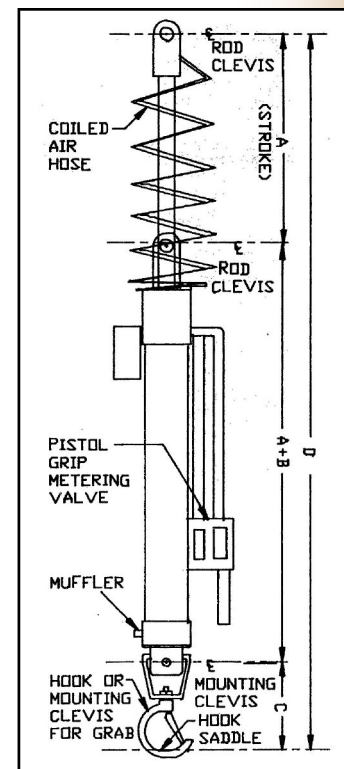
- ◆ Ease of movement & Positioning
- ◆ Enhanced Operator Safety
- ◆ Increased Productivity
- ◆ Reduced Operator Fatigue
- ◆ Protection of Delicate Payloads
- ◆ Increased Quality

MODEL NO.	MAX CAP. LBS	BORE DIA	ROD DIA	B	C
PL0075 - (*)	75	1.250	.375	6.8	4.22
PL0180 - (*)	180	2.000	.750	8.8	4.22
PL0300 - (*)	300	2.500	.750	9.1	4.16
PL0600 - (*)	600	3.500	1.000	11.1	4.09
PL0800 - (*)	800	4.000	1.000	9.0	4.84
PL1020 - (*)	1020	5.000	1.000	10.8	4.84

(\*) Denotes **POS-A-LIFT** stroke in inches.  
12", 24", 36" & 48" are standard strokes.

Example: PL0300 - 24

**AIMCO Manufacturing can customize its standard designs of lift assist equipment to suit your application**



203 Matzinger Road Toledo, OH 43612  
**Phone:** 419-478-4851 **Fax:** 419-476-1324  
[www.AimcoManufacturing.com](http://www.AimcoManufacturing.com)